



Hillborough Infant & Nursery School

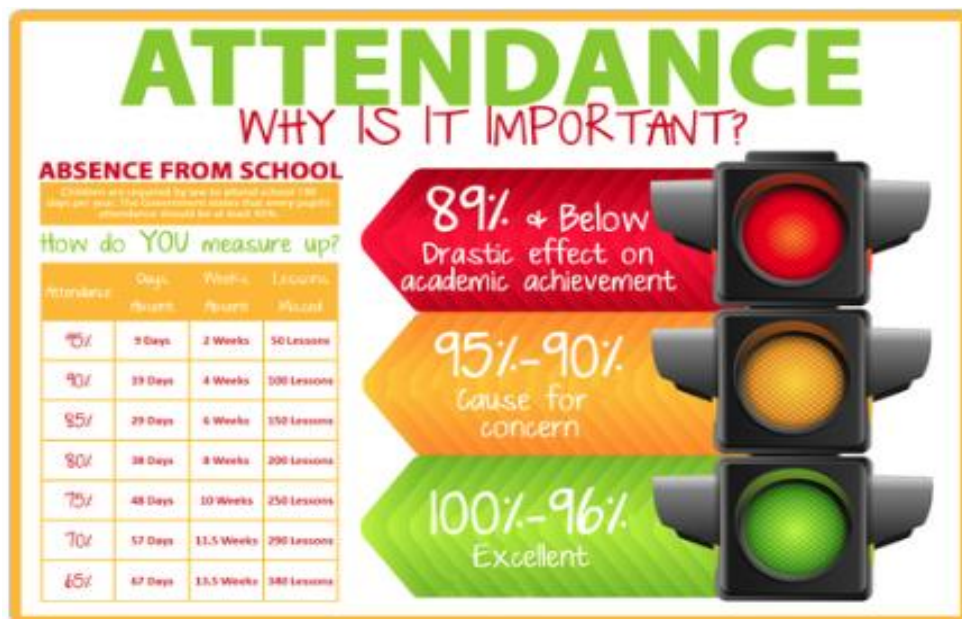
Attendance Matters

There are many of you who bring your children to school on time every day and as a result they have excellent attendance. Attendance and punctuality are important disciplines that help to structure our daily lives and must be taught to the children. Schools have a duty to prepare pupils for life in the 21st century as fully formed citizens and part of this journey is to teach them about the importance of these two disciplines.

The Government line on attendance is very clear:

Central to raising standards in education and ensuring all pupils can fulfil their potential is an assumption so widely understood that it is insufficiently stated – pupils need to attend school regularly to benefit from their education. Missing out on lessons leaves children vulnerable to falling behind. Children with poor attendance tend to achieve less in both primary and secondary school.

Every pupil must have an attendance of 96% in order for them to comply with the government regulation. When a child's absence falls below this figure it has a dramatic impact on their learning. The figures below state very clearly the affect absence has on your child's learning.



Attendance figures

Term	%
Autumn 1	94.2
Autumn 2	92.6
Spring 1	92.8

As a result of this the school has introduced a number of incentives and initiatives to address this ongoing issue.

Weekly 100% attendance stickers

Every pupil who has 100% attendance and 100% punctuality during the week will receive an awesome sticker and be acknowledged in our Friday celebration assembly.

Half-termly 97% plus certificate

All children who have 97% plus attendance over a half term will receive a certificate in our Friday celebration assembly.

Attendance Bears

Ruby and Markus will spend the week with the class with the best attendance and are presented in our Friday celebration assembly. They are a much loved part of the school team!

Yearly 100 % trophy

We have also introduced an attendance trophy which is presented to the children who have achieved 100% attendance throughout the whole year.

Punctuality

This is another area the school has to address and improve in order to drive up standards. Many of you have excellent punctuality habits and bring your child to school on time every day **but we still have a number of children who arrive to school late each day.**

The figures below state very clearly the impact lateness has on your child's education:



Late figures

Term	Amount
Autumn 1	194
Autumn 2	349
Spring 1	255

Since September there has been a large number of children who have arrived late to school:

This is a very worrying set of statistics. Every effort must be made to reduce this figure immediately. As a school we understand that mornings can be very stressful and challenging for a family. If you do experience difficulties, we ask that you inform the school so that we can give you as much support as possible. One way we help families in the mornings is for them to attend Breakfast Club. Do consider this as an option if you feel it will help. We need to work together as a community to help each other with this ongoing issue. Please support one another if you are able to, and speak with Mrs Owen our Family Support worker if you are experiencing difficulties. Thank you for your continued support.

Kind regards,

Mrs Sally Barber

Attendance Lead
Assistant Headteacher